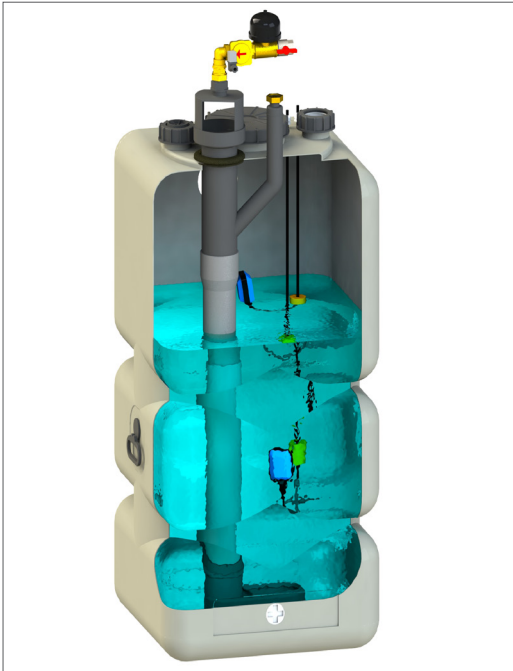


# IRM®-HYBRIDE SYSTEEMTANK AQF

Complete rainwater system with system tank for hybrid system



## PRODUCT DESCRIPTION

GEP's RCD pumping systems have been built using the high-quality self-priming GEP RC pumps, equipped with built-in thermal protection and GEP's DPA pump control. It is recommended to extend these sets with a pressure vessel from GEP. These hydrofore sets are suitable for pressure increase and rainwater use in industry and utilities, or can be used in all places where the water pressure needs to be increased.

## SCOPE

Everywhere there is a need for a complete pre-assembled pump group with a relatively large pump capacity and a high operating reliability with freely programmable switch-on and switch-off pressure.

kiwa  
gecertificeerd

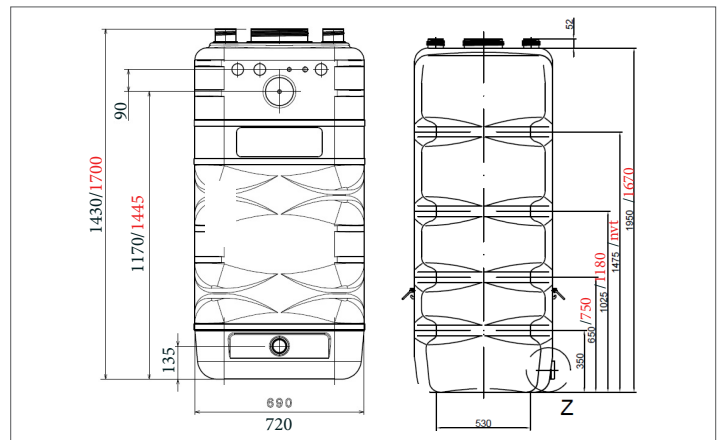
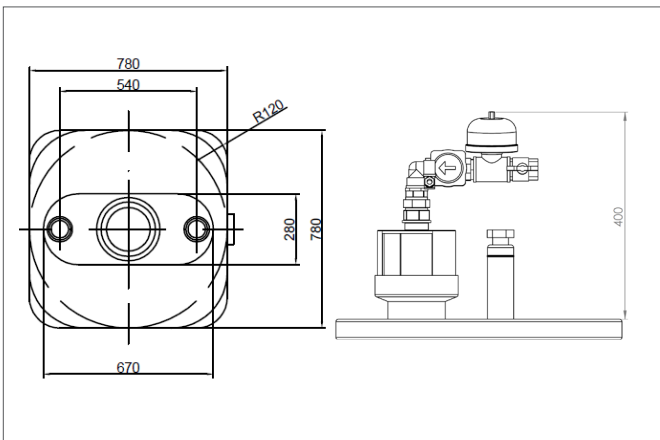


WATERLEIDING-  
TECHNISCH VERBOD



CERTIFICAAT  
BELGAQUA

## TECHNICAL DATA



## ORDERING INFORMATION

Art nr	NAME	PG
402619	IRM® - Hybrid AQF 570 Liter	4
402621	IRM® - Hybrid AQF 750 Liter	4
402122	IRM® - Hybrid AQF 1000 Liter	4
402713	Anti-mist set IRM® 8	4
402711	Level sensor with 50 meters of cable	4
409250	Level sensor tank installation	4
401251	Automatic time-controlled filter cleaner 1 "	4

